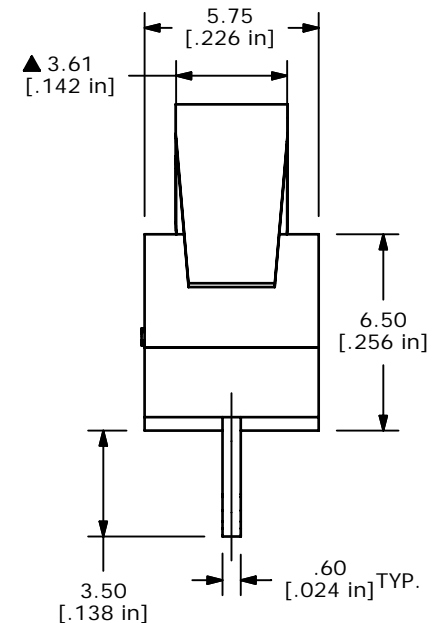
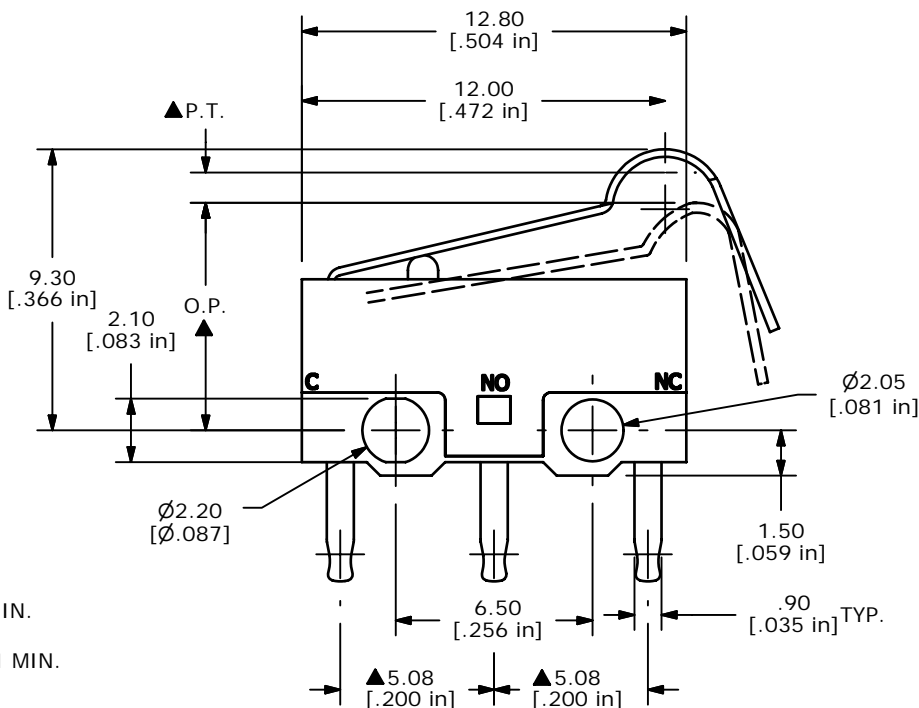


O.P. (MM)	P.T. (MM)
7.5 +/- 0.5	1.8 MAX.

O.P. = OPERATING POINT
P.T. = PRE-TRAVEL



- NOTE:
1. ALL DIMENSIONS IN MM [INCH]
 2. GENERAL TOLERANCE: X.X=±0.4
X.XX=±0.25
 3. TERM. NOS. FOR REFERENCE ONLY.
 - ▲4. RATING: .1A @ 5V DC
 5. CONTACT MATERIAL: SILVER
 6. MECHANICAL LIFE: 1,000,000 CYCLES MIN.
 7. ELECTRICAL LIFE: 10,000 CYCLES MIN.
 8. DIELECTRIC STRENGTH: 1000VAC FOR 1 MIN.
 - ▲9. OPERATING FORCE: 55gf
 10. OPERATING TEMP: -25° C TO 85° C
 - 11.▲DENOTES CRITICAL PARAMETER
 12. 2002/95/EC (ROHS) COMPLIANT
 13. INSUL. RESISTANCE: 100 MEGA-OHMS MIN.



C	17500	REVISED AND REDRAWN	7/23/07	BF
REV	PCR NO	DESCRIPTION	DATE	BY

TITLE DM085Q103F055P1A				
SCALE	DATE	DR	DWG	REV
4:1	7/23/2007	BF	P030013	C

THE INFORMATION CONTAINED IN THIS DOCUMENT IS PROPRIETARY TO E-SWITCH AND IS NOT TO BE COPIED OR TRANSFERRED